



# Operating instruction SR 540 Face Shield

# General information

The SR 540 together with fan unit SR 500 and approved filters are included in the Sundström fan-assisted respiratory protective device system conforming to EN 12941/EN 12942:1998 class TH3.

SR 540 together with compressed air attachment SR 507 and breathing hose SR 358/SR 359/SR 360 are included in the Sundström compressed air-fed respiratory device system conforming to EN 14594:2005 class 3A/3B.

This combination gets a respiratory with continuous flow to a compressed air fed respiratory device.

SR 540 is in one size.

When selecting equipment for SR 540 some of the factors that should be taken into account are as follows:

- Type of pollutant
- Concentrations
- Work intensity
- Protection requirements in addition to respiratory protective advice.

Risk analysis should be carried by a person who has suitable training and experience in the area.

Instructions for use for SR 540 should be read before use.

## 2.1 Unpacking SR 540

### 2.2 Packing list



Check that the equipment is complete in accordance with the packing list and has not been damaged in transport.

#### Packing list:

- Face shield
- Breathing hose.
- Visor
- User instructions
- Cleaning tissue
- Protective film

## 2.3 Assembly



Check that the O-ring of the hose is in place.



Check that the flat gasket is ok and in place at the other end.



Connect the end with the flat gasket to the face shield.



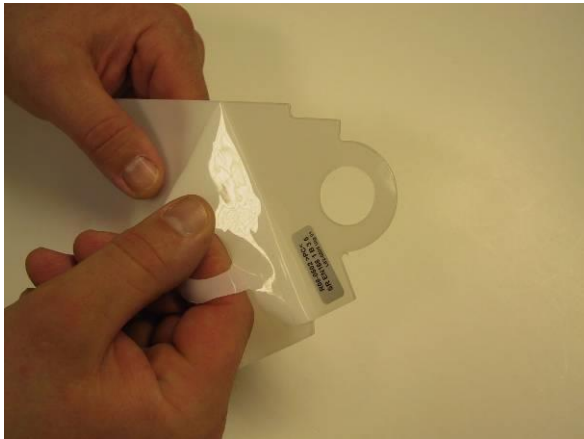
Turn it clockwise about 1/8 of a turn.

The hose is now connected to the face shield.

## Visor



Remove the closing panels by pushing them forward with your thumb.



Remove the protective film from the visor.



Secure the visor to the fixed mounting.



Then put the visor to the over-centre mounting.



Tension the visor by moving the lever downward as far as it will go.



Check that the visor is firmly in contact with the visor opening seal all around.



Fit the closing panels by pushing them into place with your fingers. A clicking sound indicates that they are in place.



Connect the hose to the fan unit and turn it clockwise about 1/ 8 of a turn.

## Flow control



Place the head top in the flow meter and start the fan unit.

Grip the lower part of the bag to seal around the breathing hose.

Grip the flow meter tube with the other hand so that the tube points vertically upwards from the bag.

Read the position of the ball in the tube. This should hover at a level with or slightly above the upper marking on the tube.

**If minimum flow is not achieved, check that:**

- The flow meter is held upright.
- The ball moves freely.
- The bag seals well around the hose.

## 2.4 Putting the face shield on



Raise the visor and put the face shield on.



If necessary, adjust the head harness in height by lengthening or shortening the strap for the top of the head.





If necessary, adjust the circumference of the head harness by means of the knob at the rear of the head harness.



Lower the visor unit by pulling the face seal down under your chin.



A clicking sound indicates that the visor unit has been lowered fully.



Insert a finger between your chin and the face seal and run the finger along the contact surface of the face seal all the way round to check that it fits well against the face.



Check that the breathing hose runs along your back and that it is not twisted.

## 4 Maintenance

### 4.1 Cleaning/Disinfecting



Sundström cleaning tissues SR 5226 that clean and disinfect are recommended for daily care.

Clean face shield and visor



If the equipment is more heavily fouled, use a soft brush or sponge moistened with a solution of water and dishwashing detergent or the like. Rinse the equipment and leave it to dry.



Clean left and right closing panel.



Clean the valve seat and check that the valve seat is ok.



Clean the exhalation membrane.



Clean the valve cover on the inside and outside.



Clean around the mounting points for the visor.



Clean around the opening seal.



Clean the seal.



Clean the face seal.

## 4.2 Storage

After cleaning, store the equipment in a dry and clean place at room temperature. Avoid exposing it to direct sunlight. The flow meter can be turned inside out and can be used as storage bag for the head top.

## 4.3 Maintenance schedule

	Before use	After use	Annually
Visual inspection	●	●	●
Performance check	●		●
Cleaning/disinfecting		●	●
Change of O-ring for breathing hose			●
Change of gasket for breathing hose			●
Change of exhalation membrane			●

The schedule represents the minimum requirements for maintenance routines in order to ensure that equipment will always be in functional condition.

### 4.4.1 To change the exhalation membrane



Snap of the valve cover from the valve seat.



Slip off the membrane.



Check that the valve seat is ok



Press the new membrane onto the pin. Carefully check that the membrane is in contact with the valve seat all way round.



Press the valve cover into place. A clicking sound indicates that it is in place.

#### 4.4.2 To change the visor



Remove the closing panels (two) by pushing them forward with your thumb.

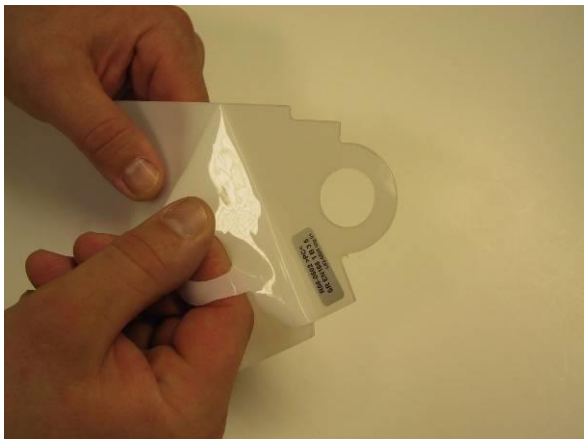




Release the visor by moving the lever of the over-centre lock upwards through about 180 degrees.



Remove the visor.



Remove the protective film from the new visor.



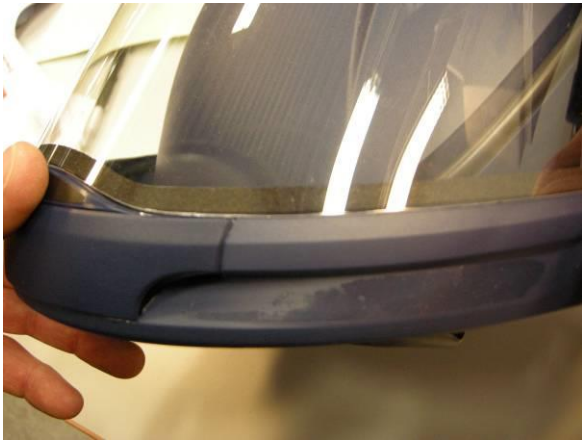
Secure the visor to the fixed mounting.



Then put the visor to the over-centre mounting.



Tension the visor by moving the lever downward as far as it will go.



Check that the visor is firmly in contact with the visor opening seal all around.



Fit the closing panels by pushing them into place with your fingers.

A clicking sound indicates that they are in place.

### 4.4.3 To change the face seal on the SR 540



Release the hooks from the head harness.



Release the face seal by pulling it's frame so that its pins are released from the visor unit holes.



Remove the face seal.



Thread the new face seal over the visor unit flange, with the centre markings in line with one other.



Thread it on the flange.



Press the face seal frame down so that the pins drop into the visor unit holes. A clicking sound indicates that they are in place.



Secure the hooks to the head harness in the place where sweatband is relieved.

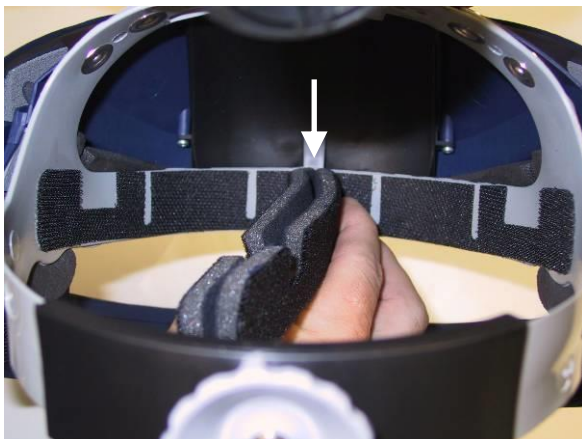
#### 4.4.4 To change the sweatband



Release the face seal hooks from the head harness.



Pull the sweatband of.



Fit the Velcro strip with the ruffled side towards the forehead strap and with relief upwards.

Fold the Velcro strip double. Fit the strip in line with the screw in head harness.



Fit the rest of the strip.



Secure the hooks to the head harness where a relief has been made in the sweatband.

## **Accessories**

### **Head cover SR 543**



Thread the head cover up under the air channel.

Fit the head cover to the four press-studs on the head harness.



Fit the head cover Velcro strip towards the visor unit strip.

### Mounting peel of SR 542



Remove the protective film on the two self adhesive dots.

Attach one dot and then the one in opposite side.

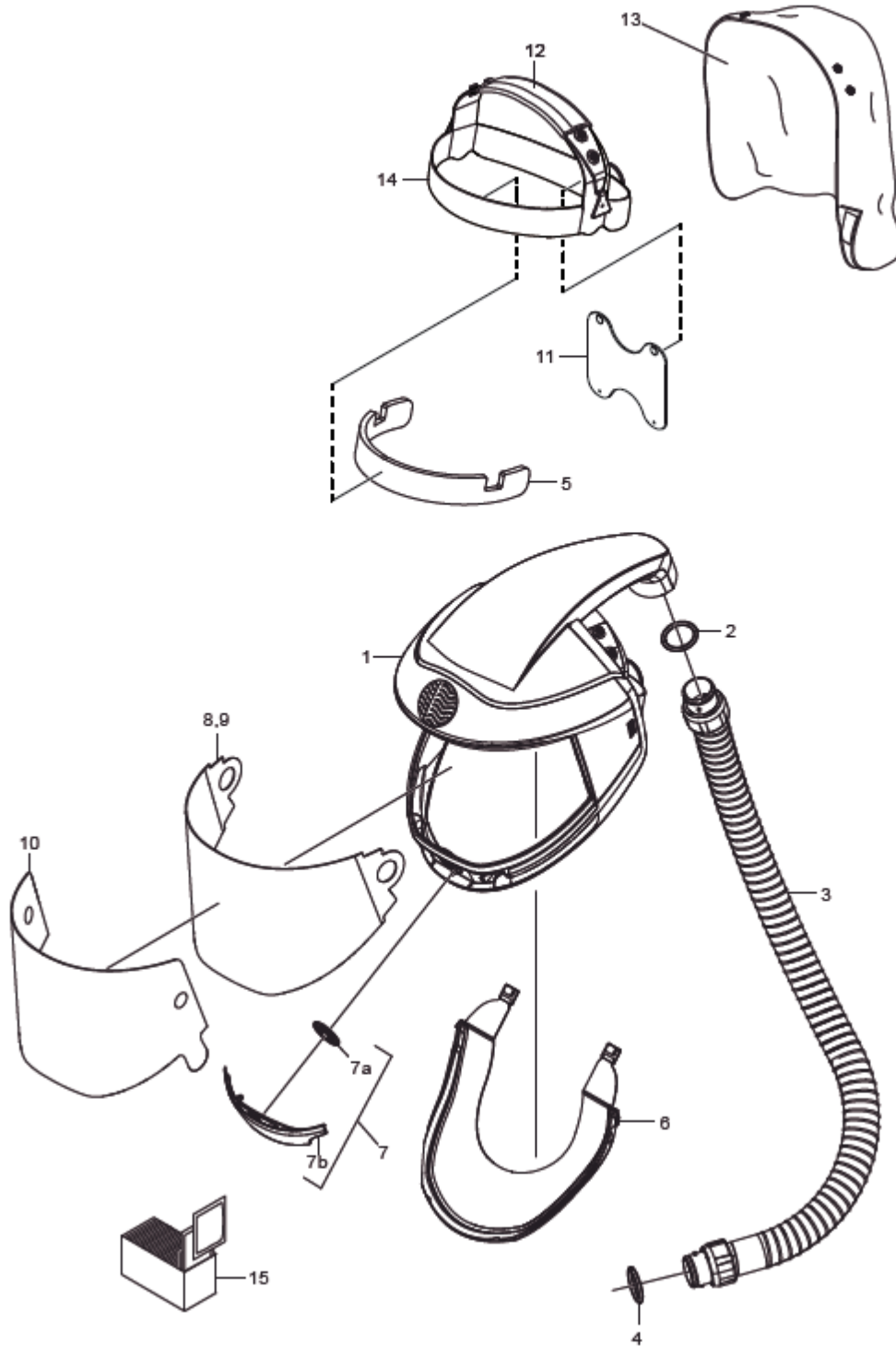
Recommend to not attaching more than 3 peel-offs at each other.



# SR 540

## Spare parts / Accessories

EN



No.	Description	Ordering No.
1.	Face shield SR 540	-
2.	Flat gasket	R06-0506
3.	Breathing hose	R06-0501
4.	O-ring	R06-0202
5.	Sweatband	R06-0504
6.	Face seal	T06-0504
7.	Set of valves SR 540	R06-0505
7a.	Exhalation membrane 1 pc.	-
7b.	Cover exhalation valve 1 pc.	-
8.	Visor set PC	R06-0502
9.	Visor set PETG	T06-0502
10.	Peel of set	T06-0501
11.	Neck comfort band	T06-0803
12.	Sweatband/Crown band	T06-0508
13.	Head cover SR 543	T06-0505
14.	Head harness	R06-0511
15.	Cleaning wipes. 50/box	H09-0401